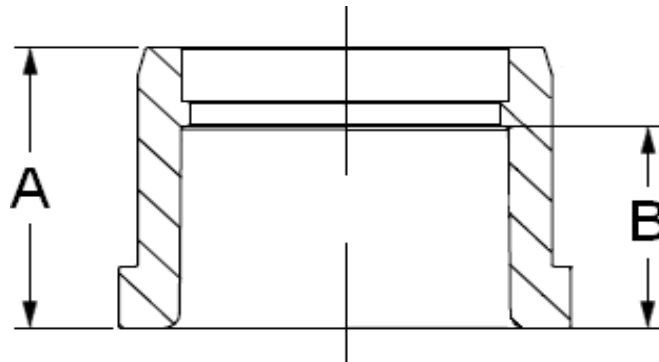


Laying Length

SCHEDULE 40

REDUCER BUSHING SLIP



INJECTION MOLDED FITTING

Part #	Description	A	B
437-101	REDUCER BUSHING SLIP 3/4 x 1/2 SCH40	1.01	0.70
437-130	REDUCER BUSHING SLIP 1 x 1/2 SCH40	1.19	0.70
437-131	REDUCER BUSHING SLIP 1 x 3/4 SCH40	1.19	0.74
437-166	REDUCER BUSHING SLIP 1 1/4 x 1/2 SCH40	1.24	0.71
437-167	REDUCER BUSHING SLIP 1 1/4 x 3/4 SCH40	1.24	0.74
437-168	REDUCER BUSHING SLIP 1 1/4 x 1 SCH40	1.24	0.89
437-210	REDUCER BUSHING SLIP 1 1/2 x 3/4 SCH40	1.44	0.74
437-211	REDUCER BUSHING SLIP 1 1/2 x 1 SCH40	1.42	0.87
437-212	REDUCER BUSHING SLIP 1 1/2 x 1 1/4 SCH40	1.46	0.96
437-247	REDUCER BUSHING SLIP 2 x 1/2 SCH40	1.52	0.69
437-248	REDUCER BUSHING SLIP 2 x 3/4 SCH40	1.52	0.74
437-249	REDUCER BUSHING SLIP 2 x 1 SCH40	1.52	0.89
437-250	REDUCER BUSHING SLIP 2 x 1 1/4 SCH40	1.52	0.95
437-251	REDUCER BUSHING SLIP 2 x 1 1/2 SCH40	1.52	1.09
437-290	REDUCER BUSHING SLIP 2 1 1/2 x 1 1/4 SCH40	2.19	1.13
437-291	REDUCER BUSHING SLIP 2 1 1/2 x 1 1/2 SCH40	2.16	1.19
437-292	REDUCER BUSHING SLIP 2 1/2 x 2 SCH40	2.17	1.17
437-338	REDUCER BUSHING SLIP 3 x 2 SCH40	2.22	0.56
437-339	REDUCER BUSHING SLIP 3 x 2 1/2 SCH40	2.36	1.76
437-420	REDUCER BUSHING SLIP 4 x 2 SCH40	2.38	1.00
437-422	REDUCER BUSHING SLIP 4 x 3 SCH40	2.22	0.34