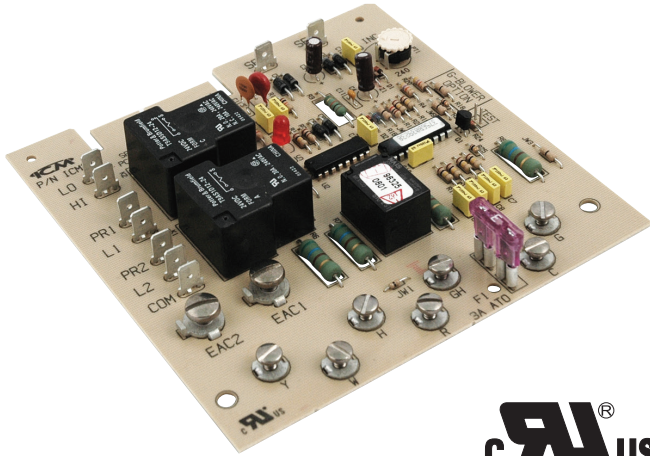




Scan to see a full specifications, installation and agency certification information.

APPLICATIONS:

APPLIANCE | ELECTRICAL | HVAC/R | MARINE | POOL & SPA | RV



REPLACES

- **Carrier:** CES0110019, HH84AA001, HH84AA003, HH84AA005, HH84AA009, HH84AA014, HH84AA015, HH84AA021
- **Robertshaw:** 695-101

FEATURES

- ✓ Form, fit and functional OEM replacement control
- ✓ Heavy duty heat relay
- ✓ Purges ducts of residual air
- ✓ Integral short cycle protection

SPECIFICATIONS

- **Voltage:** 18-30 VAC
- **Contact ratings:**
 - **N.O.:** 20 amps @ 240 VAC
 - **N.C.:** 10 amps @ 240 VAC
- **Time delays:**
 - **Heat ON delay:** 60 seconds
 - **Heat OFF delay:** 60-240 seconds
 - **Cool OFF delay:** 90 seconds

Content and specifications on sell sheets subject to change without notice.